

# FULL FLOOR SUBLEASE

9,503 SF of Prime Office Space

Direct Elevator Exposure/High Ceilings/  
Abundant Natural Light

Beautifully Appointed with Perimeter Offices,  
Conference Rooms, and Galley Kitchen

Available March 2018; Lease Term runs through 2024

\$22.00/SF + electric

1401  
WALNUT  
STREET



PERNAFREDERICK COMMERCIAL REAL ESTATE

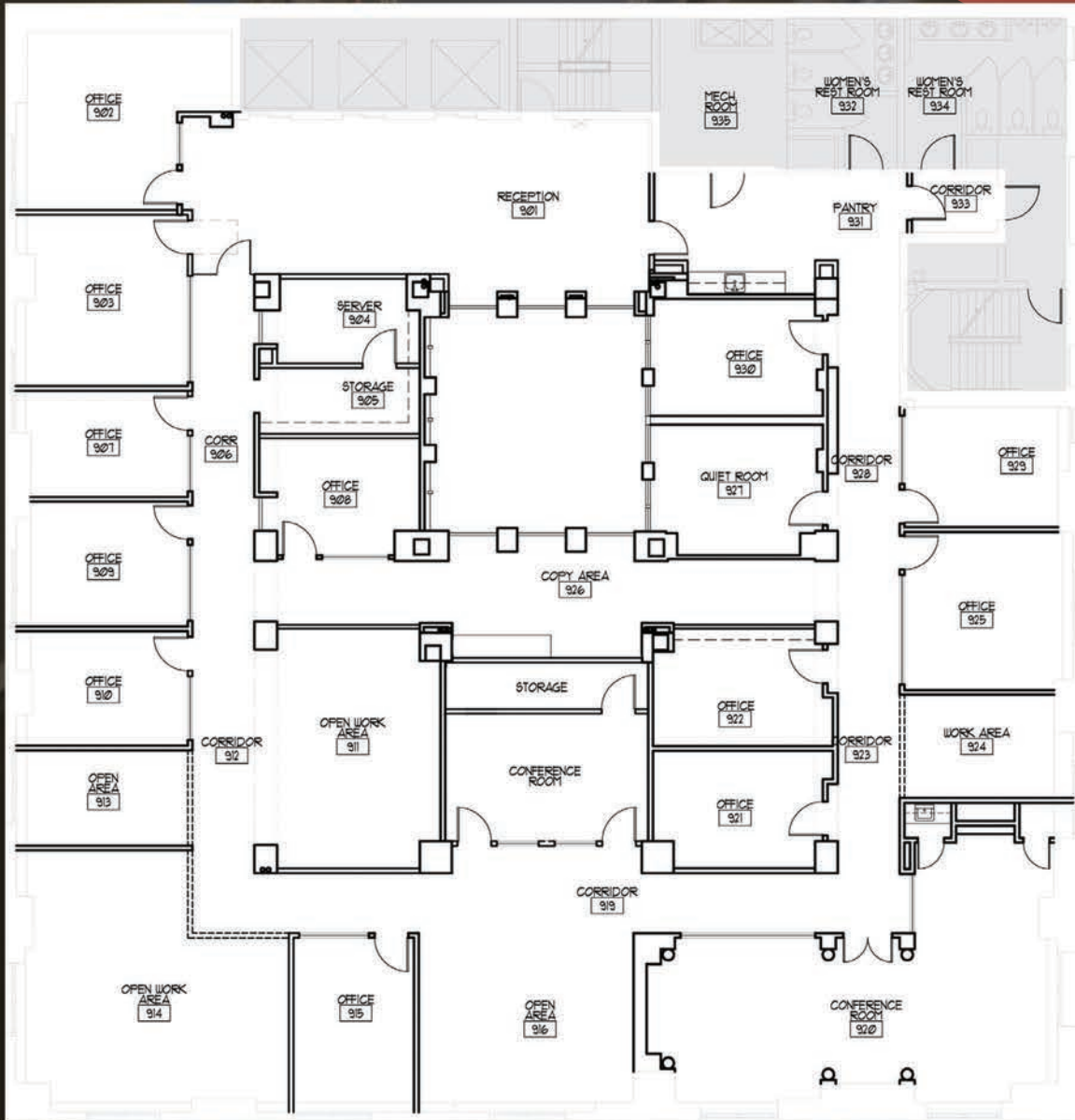
**Stephen P. Perna**  
215-496-9675 x111  
spp@pernafrederick.com

**Daniel Gummel**  
215-496-9675 x117  
dg@pernafrederick.com

# FULL FLOOR SUBLEASE

# 1401 WALNUT STREET

9,503 SF (Full Floor)



PERNAFREDERICK COMMERCIAL REAL ESTATE

**Stephen P. Perna**  
215-496-9675 x111  
spp@pernafrederick.com

**Daniel Gummel**  
215-496-9675 x117  
dg@pernafrederick.com