

1242

WEST CHESTER PIKE

OFFICE SPACE FOR LEASE! ENTIRE FLOOR I +/- 3,900 SF



**FULL FLOOR PRESENCE WITH
MONUMENT SIGNAGE ON RT. 3 AVAILABLE**

3,900 SF ON TOP FLOOR

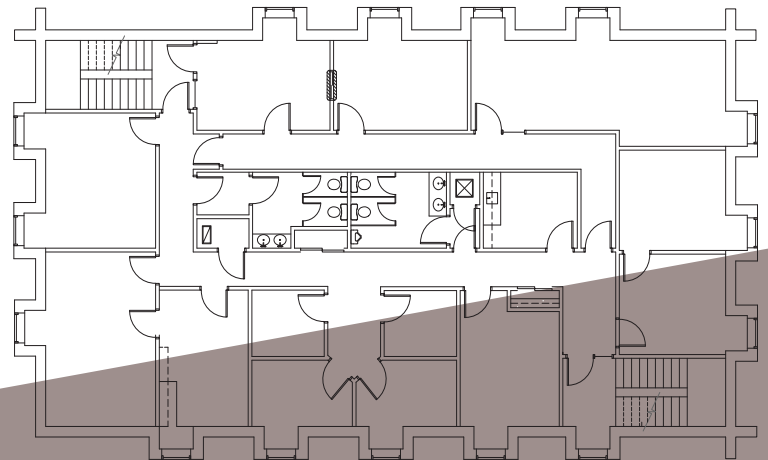
BLEND OF OFFICES AND OPEN SPACE

**PROMINENT LOCATION ON RT. 3
WITH GREAT NEIGHBORHOOD AMENITIES**

**SHORT DISTANCE TO THE BOROUGH OF
WEST CHESTER**

ABUNDANT ON-SITE PARKING

SECURE LOBBY



Stephen Perna
215-496-9675 x 111
spp@pernafrederick.com

PF
PERNAFREDERICK
COMMERCIAL REAL ESTATE

PernaFrederick Commercial Real Estate
1500 JFK Blvd, Ste 1520
Philadelphia, PA 19102
215-496-9675