



# 1835

SOUTH BROAD STREET



- Exterior signage & parking available
- Recently upgraded elevator and ADA access to each floor
- Conveniently located between Tasker-Morris and Snyder Stations on SEPTA's Broad Street Line
- Within walking distance to East Passyunk's many cafes, restaurants, and shops

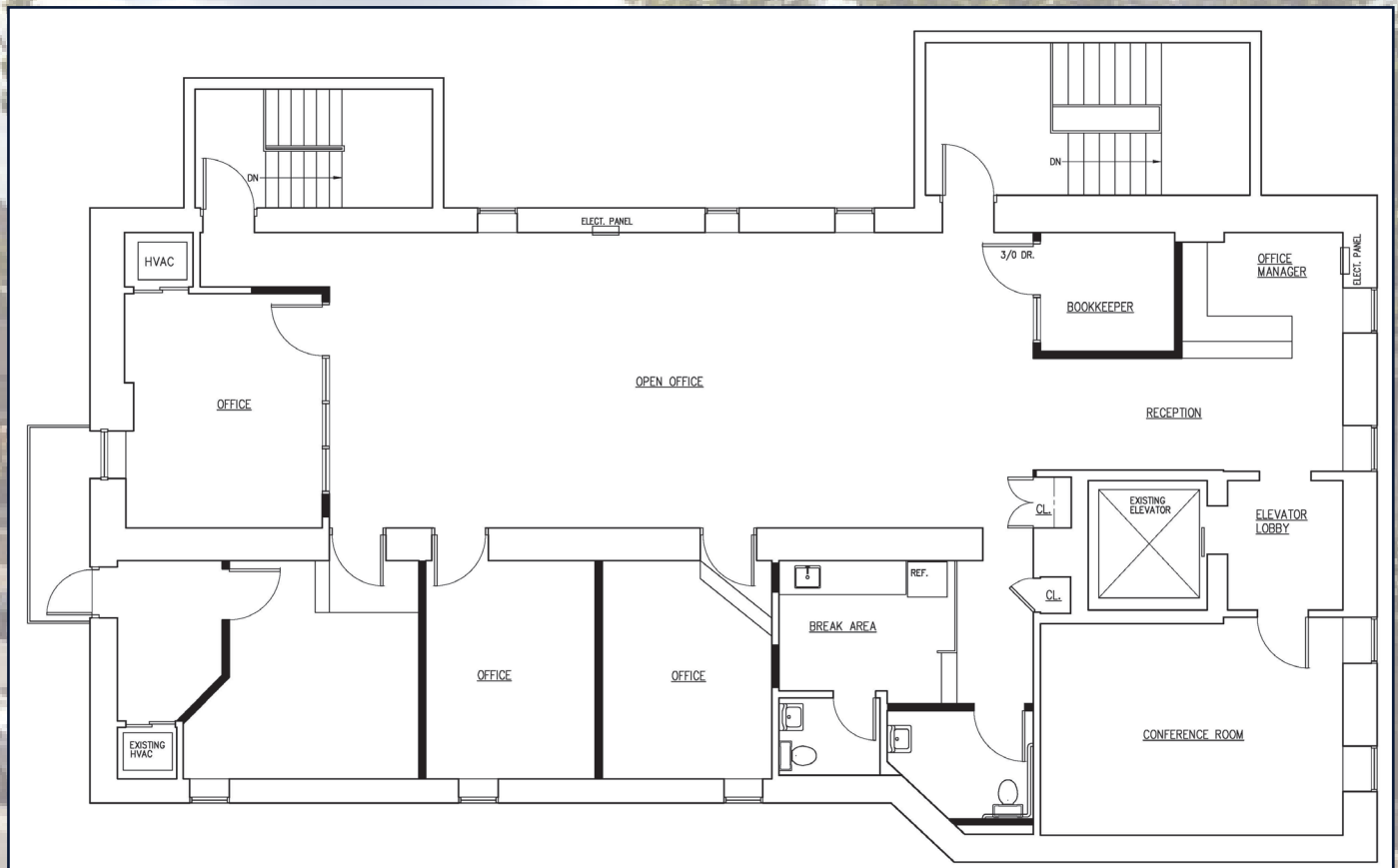
**CURRENTLY AVAILABLE**

3RD FLOOR - 3,300 SF  
 GROUND FLOOR - 1,650 SF  
 LOWER LEVEL - 3,300 SF

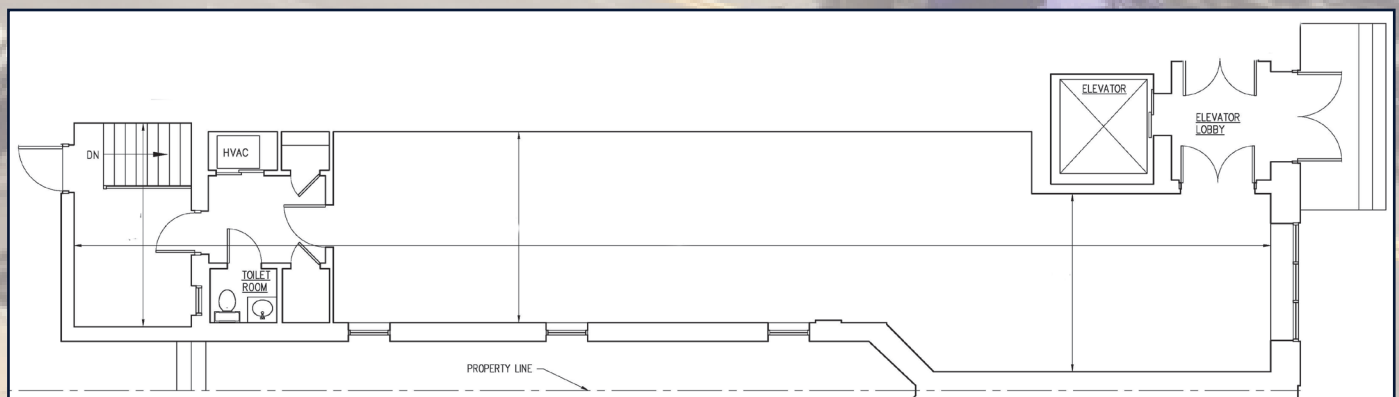
**Joseph Vitarello**  
 215-496-9675 x 113  
 jgv@pernafrederick.com



**Matthew Tomeo**  
 215-496-9675 x 119  
 mnt@pernafrederick.com



**THIRD FLOOR PLAN**



**FIRST FLOOR PLAN**

**Joseph Viturello**  
 215-496-9675 x 113  
 jgv@pernafrederick.com



**Matthew Tomeo**  
 215-496-9675 x 119  
 mnt@pernafrederick.com