

# Kimberton Post Office on 3+ Acres For Sale

2106 Kimberton Road  
Kimberton, PA 19442



PERNAFREDERICK  
COMMERCIAL REAL ESTATE



# LISTING DETAILS

- List Price: \$1,550,000
- Located in the charming town of Kimberton, Pennsylvania
- Acres: 3.08
- Includes fully leased 8,000 SF 2-story stone post office building, 2-story shell ready for redevelopment, barn and 2-story garage.
- Parking: Surface - 17 spaces.
- Located on the corner of Hares Hill and Kimberton Roads between Exton and Phoenixville, directly across from the historic Kimberton Inn
- Previously known as the Christman Mill building, this historic landmark located in the center of Kimberton, now serves as the Kimberton Post Office.



**Matthew W. Frederick**

(215)-496-9675 ex. 114  
mwf@pernafrederick.com



**William J. Pasquale**

(215)-496-9675 ex. 20  
wjp@pernafrederick.com





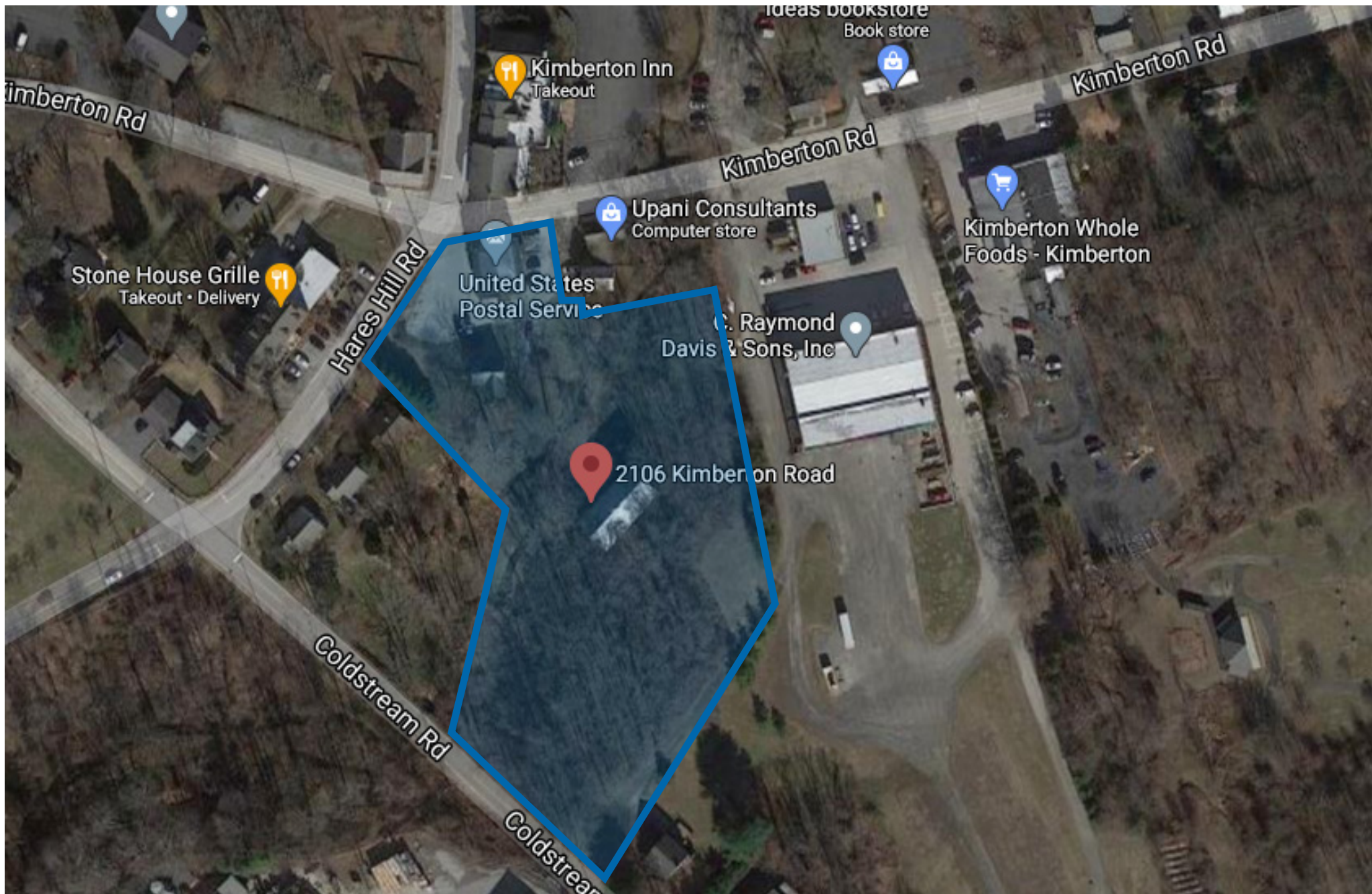
# AERIAL VIEW

Matthew W. Frederick

(215)-496-9675 ex. 114  
mwf@pernafrederick.com

William J. Pasquale

(215)-496-9675 ex. 20  
wjp@pernafrederick.com





# AREA HIGHLIGHTS

Matthew W. Frederick

(215)-496-9675 ex. 114  
mwf@pernafrederick.com

William J. Pasquale

(215)-496-9675 ex. 20  
wjp@pernafrederick.com



## PUBLIC SERVICES

East Whiteland Township Police Department

Kimberton Fire Company

Chester County Department of Voter Services

Phoenixville Public Library

## PARKS & RECREATION

Kimberton Fair Grounds

Kimberton Park





# PROPERTY PHOTOS

Matthew W. Frederick

(215)-496-9675 ex. 114  
mwf@pernafrederick.com

William J. Pasquale

(215)-496-9675 ex. 20  
wjp@pernafrederick.com

