

Kimberton Post Office on 3+ Acres For Sale

2106 Kimberton Road
Kimberton, PA 19442



PERNAFREDERICK
COMMERCIAL REAL ESTATE

LISTING DETAILS

- List Price: \$1,550,000
- Located in the charming town of Kimberton, Pennsylvania
- Acres: 3.08
- Includes fully leased 8,000 SF 2-story stone post office building, 2-story shell ready for redevelopment, barn and 2-story garage.
- Parking: Surface - 17 spaces.
- Located on the corner of Hares Hill and Kimberton Roads between Exton and Phoenixville, directly across from the historic Kimberton Inn
- Previously known as the Christman Mill building, this historic landmark located in the center of Kimberton, now serves as the Kimberton Post Office.



Matthew W. Frederick

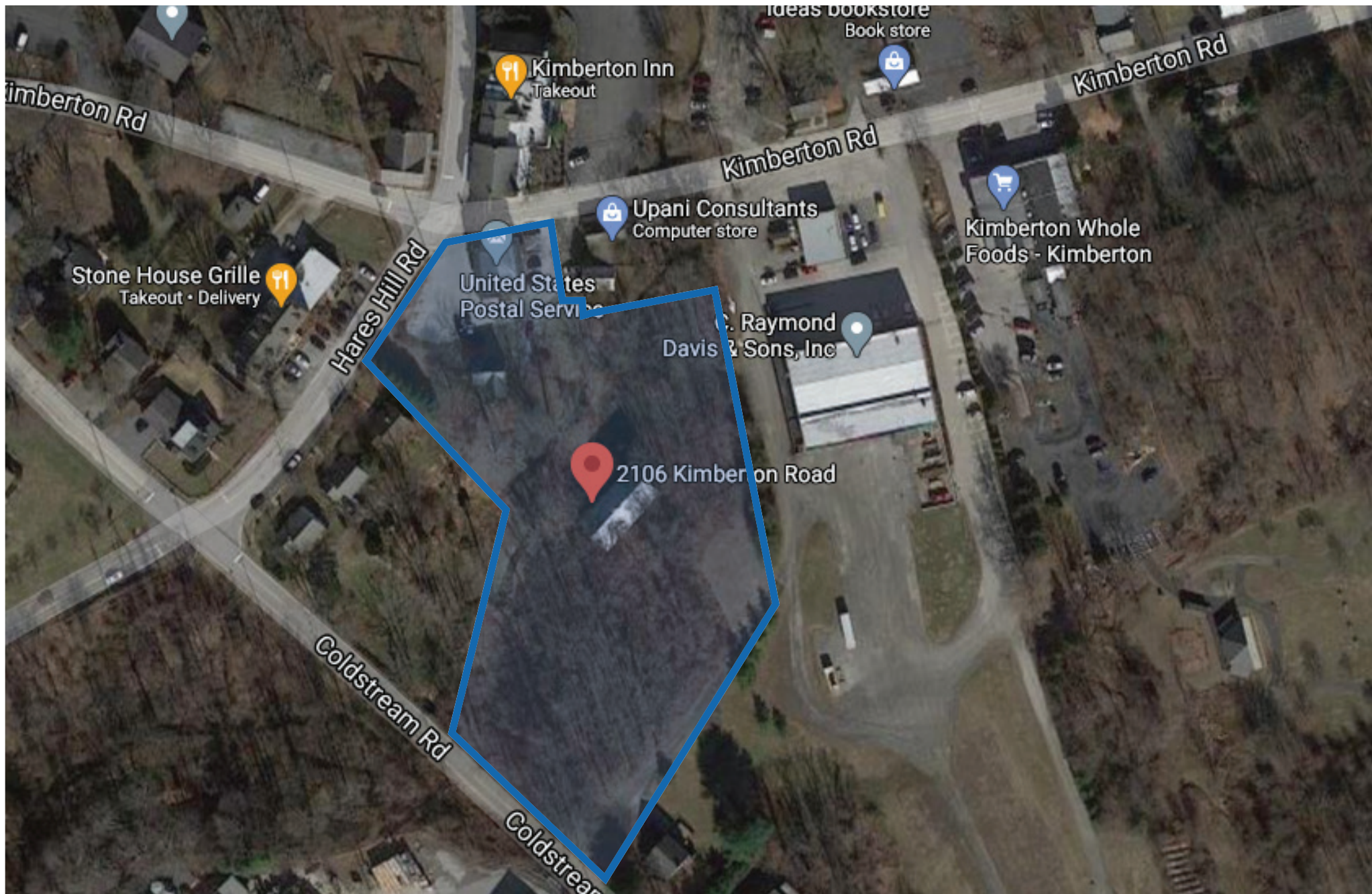
(215)-496-9675 ex. 114
mwf@pernafrederick.com



AERIAL VIEW

Matthew W. Frederick

(215)-496-9675 ex. 114
mwf@pernafrederick.com



AREA HIGHLIGHTS

Matthew W. Frederick

(215)-496-9675 ex. 114
mwf@pernafrederick.com



PUBLIC SERVICES

East Whiteland Township Police Department

Kimberton Fire Company

Chester County Department of Voter Services

Phoenixville Public Library

PARKS & RECREATION

Kimberton Fair Grounds

Kimberton Park



PROPERTY PHOTOS

Matthew W. Frederick

(215)-496-9675 ex. 114
mwf@pernafrederick.com

