

# TWO PENN CENTER

1500 JOHN F. KENNEDY BOULEVARD, PHILADELPHIA, PA 19102

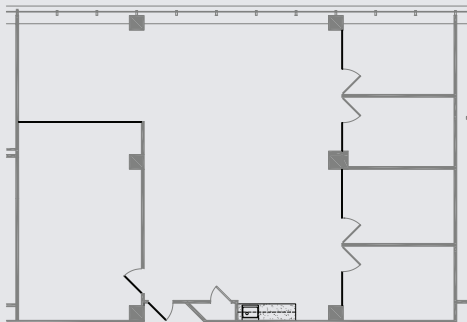
ACTUAL VIEW FROM SUITE 540



FULL GLASS FRONTS AT OFFICES



SUITE 540 | 2,488 SF | \$16/SF, GROSS



## SUBLEASE

LXD: 6/30/22

FOUR OFFICES WITH FULL GLASS FRONTS,  
CONFERENCE ROOM, KITCHENETTE, + OPEN PLAN

LOVE PARK VIEWS!



DANIEL GUMMEL

610-212-9997

dg@pernafrederick.com



PERNAFREDERICK  
COMMERCIAL REAL ESTATE

MATTHEW FREDERICK

215-496-9675 x114

mwf@pernafrederick.com